

CRUSADER FOOTBALL
2010 NCCAA
NATIONAL CHAMPIONS



Building Champions.
JOIN TODAY!



**NORTH GREENVILLE
UNIVERSITY**

CRUSADER CLUB

2011 - 2012



BASEBALL



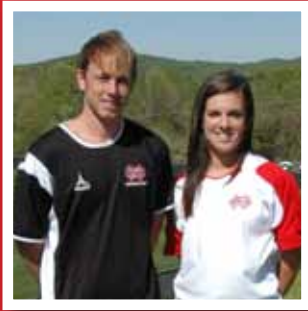
GOLF



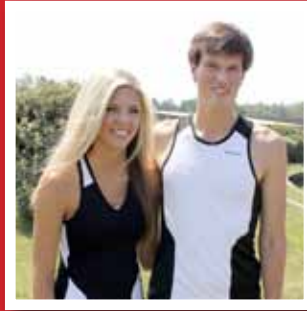
TENNIS



BASKETBALL



SOCCER



TRACK & FIELD



CROSS-COUNTRY



SOFTBALL



VOLLEYBALL

BECOME A DIFFERENCE MAKER TODAY!

As spokespersons for the Crusader Club, we have the awesome privilege of encouraging you to make a difference for over 300 student-athletes that participate in 16 competitive NCAA Division II varsity sports teams at North Greenville University by joining the Crusader Club for the 2011-2012 academic year.

We are delighted to report that our athletic teams and student athletes are gaining increased regional and national recognition by recently winning four national NCCAA championships. These significant achievements could not happen without scholarships for student-athletes.

As we begin play in the South Atlantic Conference for football and in Conference Carolinas for all non-football sports, we need your help in increasing our scholarship dollars for student-athletes, as well as

support for our athletic programs and facilities.

How can you help? It's simple: by becoming a member of the Crusader Club. By joining the Crusader Club, you will receive the personal satisfaction of knowing that you are helping our student-athletes excel at their sports, and in their future careers. Crusader Club members receive a number of tangible benefits which are listed on the back of this brochure including invitations to special Crusader Club events and free admission to all sporting events except football.

Please join us in making a difference in the lives of our student-athletes and helping us build Champions for Christ. We pray that you will join the Crusader Club today. Go Crusaders!

For More Information: Visit the NGU website at www.ngu.edu or contact the Crusader Club Office at (800) 468-6642 or (864) 977-7182 or by email at crusaderclub@ngu.edu.

Respectfully,

Wayne Landrith & Michael Batchelor



WAYNE LANDRITH (LEFT)
VICE PRESIDENT FOR THE CRUSADER CLUB &
CORPORATE AND FOUNDATION GIVING

MICHAEL BATCHELOR (RIGHT)
PRESIDENT, CRUSADER CLUB COUNCIL



GO CRUSADERS!



MEMBERSHIP LEVELS & BENEFITS

FULL SCHOLARSHIP
\$20,000

HALF SCHOLARSHIP
\$10,000

TRUSTEE CIRCLE
\$5,000

PRESIDENT'S CLUB
\$2,500

COACHES' BOX
\$1,000

SWORDSMAN SOCIETY
\$500

LOYALTY CLUB
\$250

CRUSADER
\$100

**COLLEGIATE
(STUDENTS ONLY)**
\$20

NGU SHIRT	4 (Golf Shirts)	3 (Golf Shirts)	2 (Golf Shirts)	1 (Golf Shirt)	1 (Golf Shirt)	1 (Tee Shirt)	1 (Tee Shirt)	1 (Tee Shirt)	1 (Tee Shirt)
DECALS & WRISTBANDS	2	2	2	2	2	2	2	2	2
NGU HAT	4	3	2	2	2	2	2		
ATHLETIC SEASON PASS (NON-FOOTBALL)	4 (Passes)	4 (Passes)	2 (Passes)	2 (Passes)	1 (Pass)	1 (Pass)			
PRIORITY FOOTBALL PARKING	2 (Assigned)	2 (Assigned)	1 (Priority)	1 (Priority)	1 (Priority)				
PASS: PRESIDENT'S BOX (BY REQUEST ONLY)	4 (All Home Football Games)	2 (All Home Football Games)	2 (All Home Football Games)	2 (Two Home Football Games)	2 (One Home Football Game)				
PASS: LETTERMAN'S ROOM (BY REQUEST ONLY)	4 (All Home Football Games)	2 (All Home Football Games)	2 (All Home Football Games)	2 (Two Home Football Games)	2 (One Home Football Game)				
PLAYER SPOT: FALL ALUMNI GOLF TOURNAMENT	4 Spots	2 Spots	1 Spot	1 Spot	<i>Crusader Club benefits run from 8.1.2011 to 6.1.2012</i>				